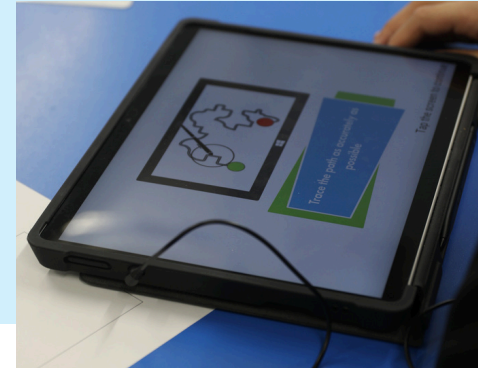
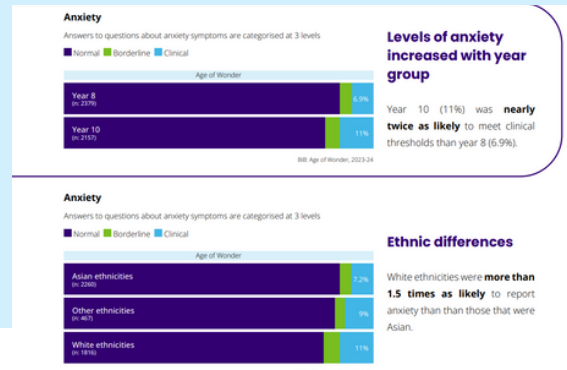


DATA IN A DASH



BIB: AGE OF WONDER DATA DASHBOARD FOR SENIOR LEADERSHIP USER GUIDE

INTRODUCTION

HOW ARE SCHOOLS USING THE DATA DASHBOARD

HOW TO USE THE DATA DAHSBOARD

USEFUL INFORMATION FOR USING YOUR DATA DASHBOARD



<https://borninbradford.nhs.uk>

INTRODUCTION

Born in Bradford (BiB) is a world leading research study that started in 2007. Over 12,500 pregnant women and their babies were recruited to the original BiB cohort and we have been following their families lives ever since. In the last 18 years, BiB has branched off into projects focusing on a wide variety of topics including air pollution, physical activity and educational attainment (Find out how on <https://borninbradford.nhs.uk/>). In 2022, BiB: Age of Wonder (AoW) project was launched! The aim of this part of the study is to continue joining the original BiB cohort on their journey through adolescence while also opening it up to all teenagers across the city.

Data has been collected from year 8, 9 and 10's in around 30 secondary schools via surveys, brain games, health measures (height, weight, blood pressure and skin folds) and blood samples. The data collected cover all aspects of a young person's life including their mental health, physical health, family life, friends and hobbies.



The BiB: Age of Wonder Data Dashboard for senior leadership is a unique platform to give AoW schools access to in-depth data about their school. This platform allows you to compare your school both at the regional and national level, on a range of metrics identified by researchers and local SLT.

We hope you use this data to continue making significant change in your school and in your city via routine reporting (e.g. OFSTED), priority setting or to access programs and interventions!

Benefits of your bespoke Data Dashboard platform:

- Understand the most important issues affecting students at your school
- Measures include mental health, physical health, socioeconomic and school safety
- Compare with other schools in Bradford and across the country
- Identify prior themes and demographics
- Find out what resources and services are available where needs are identified
- Inform interventions



HOW ARE AOW SCHOOLS USING THE DATA DASHBOARD

- Creating systematic change within the school (e.g. reviewing their policies around bullying)
- Adapting lesson plans around the data (e.g. PSHE lessons around online safety)
- Spreading awareness about the key topics to all staff within the schools (e.g. via SLT meetings)
- Including data and figures as part of the pre-inspection report for OFSTED



ACCESSING YOUR DATA DASHBOARD

How to create your free account:

- Email your AOW contact for more information
- You will receive an email from 'shinyapps.io' with the subject 'BIB AOW has invited you to access an application'
- Follow the link to sign up for your account
- Once signed up, follow the link to gain access



'We are only in the first year of engaging with BIB... I can only see the functionality of this dashboard improving the more data we have' – Vice Principle from a BD4 School

HOW TO USE THE DATA DASHBOARD

Topics (above): Toggle between the topic areas of interest. Choose from Mental Health, Socioeconomics, Health and Relationships, and School Safety.

Control Panel (below):

Mental Health and Wellbeing

Academic Years

Timeframe:

☐ 2022-23 ☒ 2023-24 ☐ All

Variables

Outcome:

Eating Disorder

Comparisons

Group:

None

Filters

Sex:

☒ Female ☒ Male

Year Group:

☒ Year 8 ☒ Year 9 ☒ Year 10

Ethnicity:



☒ Asian/Asian British ☒ White ☒ Other

FSM:

☒ none ☒ FSM

SEN:

☒ none ☒ SEN

- Academic Years:** Select which academic years you want to view data for. Regional and national data is available for all years, school data available only for years on AoW.
- Outcomes:** Select individual items appearing under each topic area to visualise as primary measures.
- Group:** Select different groupings to compare students between demographics (None, Sex, Year Group, Ethnicity, FSM, SEN). For example, selecting “FSM” will show how those receiving free school meals compare to those without. “None” shows the whole sample.
- Filters:** The sample data will only include students who are selected (with a tickbox). For example, un-ticking “Female” will restrict data to include only boys. This is important for single sex schools, or schools with a high proportion of certain demographics, to ensure valid comparisons with other Bradford schools.

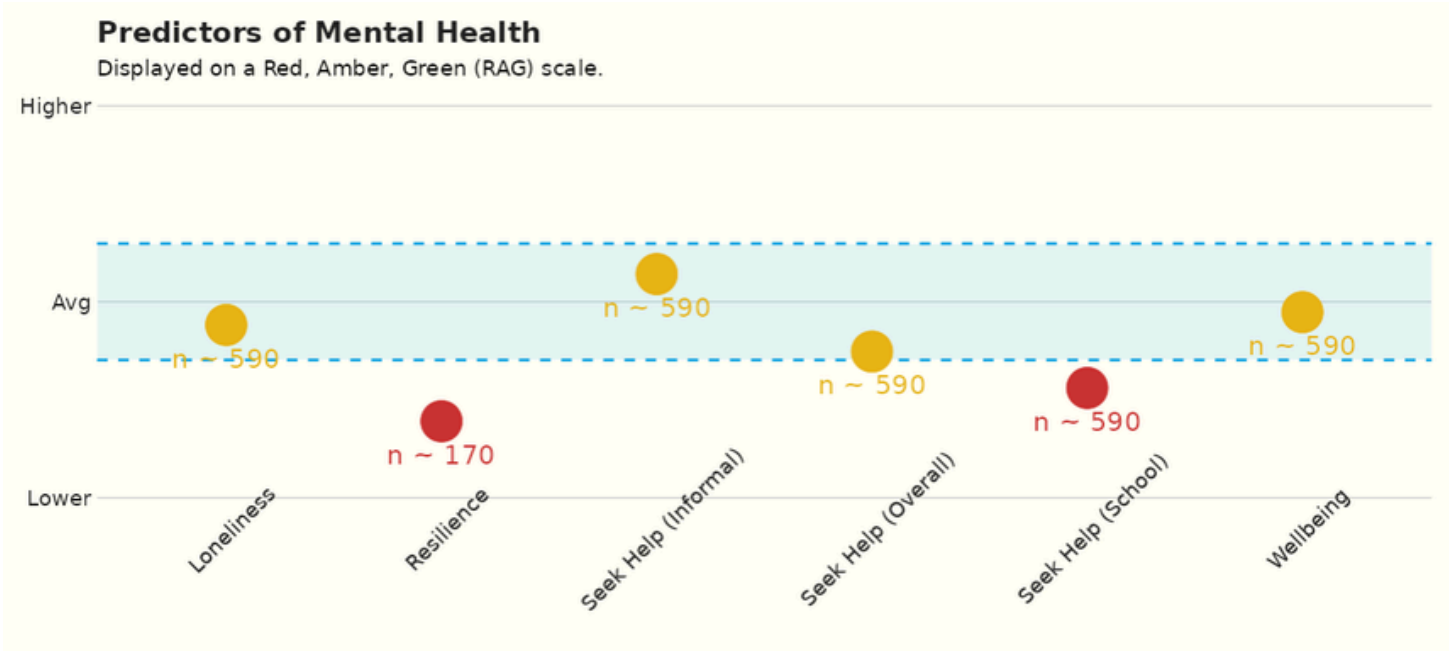
Primary Measures (below):



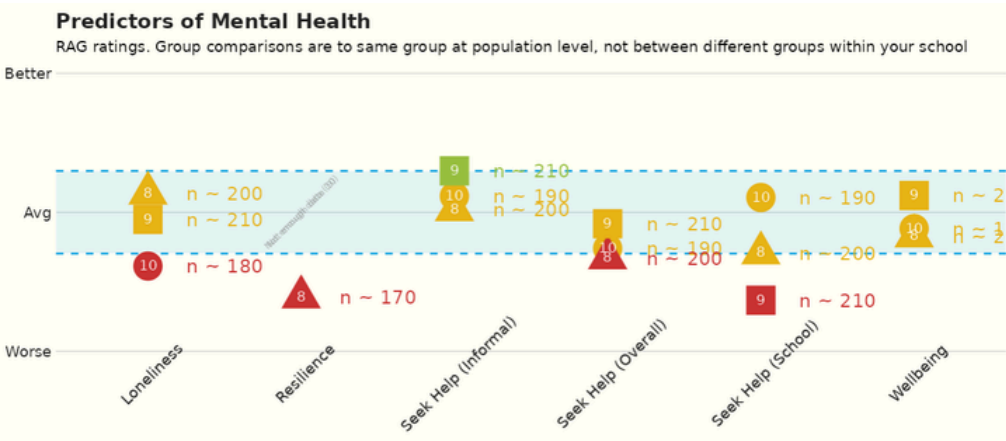
When a **group** is selected, each row will correspond to a level and you will be able to compare your school with Age of Wonder horizontally. There are no national references when comparing between groups.



Secondary Measures (below): Mental Health and Welllbeing only



Secondary measures are displayed for Mental Health and Wellbeing only. They show how your school compares to all other Age of Wonder schools on various predictors of Mental Health. This includes: Loneliness; Resilience; Help Seeking; and Wellbeing. They are displayed on a vertical **Red, Amber, Green** (RAG) scale. Scores are classified as **Green** if they are in the top 15%, **Amber** if they are in the middle 70%, or **Red** if they are in the bottom 15% of Age of Wonder schools. Higher is always better.



When a **group** is selected, there will be a shape and RAG rating for each level. Important: This does not show how the groups compare to each other, but how each group compares to the same group at other Age of Wonder schools. For example (left), year 10s at Hogwarts are in the bottom 15% of all year 10 groups across Age of Wonder. This doesn't necessarily mean they are more lonely than year 8s or 9s.

USEFUL INFORMATION FOR USING YOUR DASHBOARD

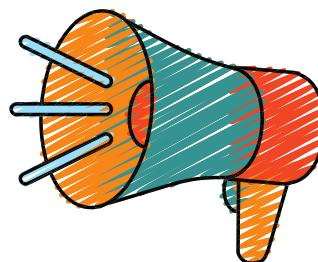
If you are having any issues accessing your dashboard please contact your main **AOW contact** or **ageofwonder@bthft.nhs.uk**

Please note, you may need to troubleshoot firewalls to gain access. To do this, please speak with your school's IT department first before contacting the AOW team.

- **Tip 1:** Every school is different. In some cases, it may be appropriate to compare your school to others with a **filter**. For example, we would expect an all girls school to have a higher prevalence of Eating Disorders as they are more common among girls. To get a more accurate comparison with other schools, they should consider removing boys from the comparison.

- **Tip 2:** Consider the context. Just because your school is performing better than other Age of Wonder schools, the local trend may be generally poor. Conversely, unfavourable comparisons to other schools may not indicate a need where others are excelling.
- **Tip 3:** Data is more accurate with larger sample sizes. The sample size is denoted by **n** (number) in figures and tables. By combining **groups** and **filters** the sample size will become smaller and smaller and the data more inaccurate. The dashboard will not display data when **n < 10**. Still, we advise against interpreting any statistic where **n** is significantly reduced.

'Some of the mental health is poorer than the national average. Now we know the extent of the issue we are now looking into ways to improve for all'
- Assistant Principle at BD2 School



SCAN ME